

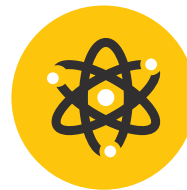
INTERNATIONAL FOUNDATION PROGRAMME



The International Foundation Programme is aimed at international students seeking to study an undergraduate degree at the University of Suffolk. This programme is a collaborative partnership between the University of Suffolk and Global Banking School (GBS).

Our International Foundation Programme is your route to an undergraduate degree at one of the UK's most transformational universities. We offer maximum flexibility depending on your English ability, you can either join the Extended Foundation Programme (which includes Pre-Sessional English) starting in September, or the standard Foundation Programme starting in January.

The Extended Foundation Programme includes a 10-week intensive English Language programme designed to help you improve your English Language skills.



Progressing to an Honours Degree

Upon successful completion of your Foundation Programme, and provided you meet the relevant English Language requirements, you will be able to progress onto a University of Suffolk undergraduate degree programme relevant to your chosen pathway (Business and Management, Life Sciences or Digital Technologies).

To find out more about entry requirements for your country please visit uos.ac.uk/yourcountry

PRE-SESSIONAL ENGLISH PROGRAMME

The Pre-Sessional English Programme has been designed to develop your English language skills. You will need an IELTS score of 4.5 or equivalent, with a minimum of 4.0 in each component. This is a full-time course delivered over 10 weeks with the aim of enhancing your English language skills to the standard required (IELTS 5.0) for study on one of the pathways of the International Foundation Programme.

It is recommended that you take the Extended Foundation Programme which includes Pre-Sessional English to strengthen your English language skills, even if you are thinking of starting directly onto one of the three pathways of the International Foundation Programme. Taking this English programme will ensure you are able to smoothly progress to an undergraduate degree at the University of Suffolk.

The academic English language content covers four key areas: English grammar and vocabulary, reading, writing, and speaking and listening. Throughout the 10 weeks you will receive regular feedback on your progress with each area through tutor-led feedback, peer review and self-assessment.

You will find the programme stimulating since it utilises a variety of teaching methods, including tutor-led classes, seminars, writing workshops, presentations, peer-working, online learning and individual tutorials.



Find out more

Our friendly Admissions team are here to help you with your application and answer all your questions. Call us on **+44 (0)20 7539 3548** or **+44 (0)7376 499 570**. Alternatively you can email us on international@globalbanking.ac.uk

Campus

Ipswich is the county town of Suffolk, packed with shops, restaurants, cosy bistros, pubs and clubs, all within easy walking distance of the main campus in Ipswich. Whatever you are studying you will be doing it in state-of-the-art surroundings as the campus boasts a host of specialist laboratories and facilities.



Accommodation

We have a number of accommodation options available for students. You can choose to live in the on-campus halls of residence, or from several off-campus halls and shared student housing options. (All off-campus accommodations are within walking distance of our main campus in Ipswich.)

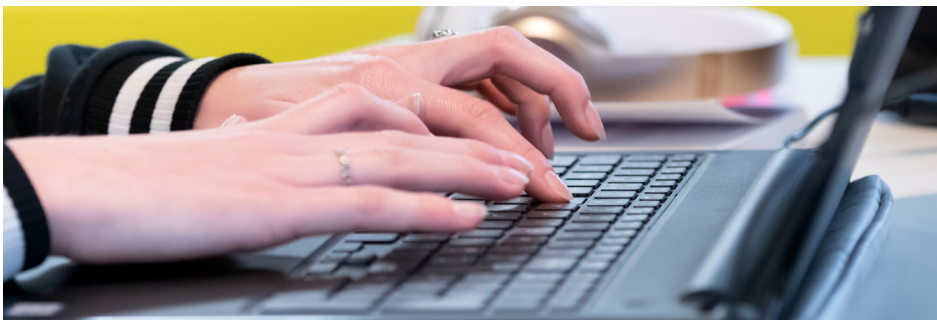




BUSINESS AND MANAGEMENT

Programme title	International Foundation Programme (Business and Management)
Awarding bodies	University of Suffolk
Level of award	FHEQ Level 3
Credit structure	120 Level 3: 120 Credits
Mode of attendance	Full-time
Standard length of programme	30 weeks
Intended award	International Foundation Certificate
English language requirements	IELTS 5.0 (minimum 4.5 in all components) or equivalent. If you do not meet these requirements there is an extended programme to enhance your English skills
Entry requirements	Successful completion of at least 12 years of high school. Please check with the admissions team for country specific requirements
Delivering institution	University of Suffolk

This definitive record sets out the essential features and characteristics of the International Foundation Programme (Business and Management pathway). The information provided is accurate for students entering Level 3 in the 2021-22 academic year



International Foundation Programme: Business and Management Pathway

The Business and Management Pathway has been designed to provide you with a foundation in the nature of business and project management. Together with academic study and English language skills provided by the programme, this will allow you to progress to one of five named undergraduate degrees at the University of Suffolk. The Business and Management Pathway will allow you to choose to progress to one of the following undergraduate degrees:

- BA (Hons) Accounting and Financial Management
- BA (Hons) Business Management
- BA (Hons) Event and Marketing Management
- BA (Hons) Event and Tourism Management
- BA (Hons) Marketing

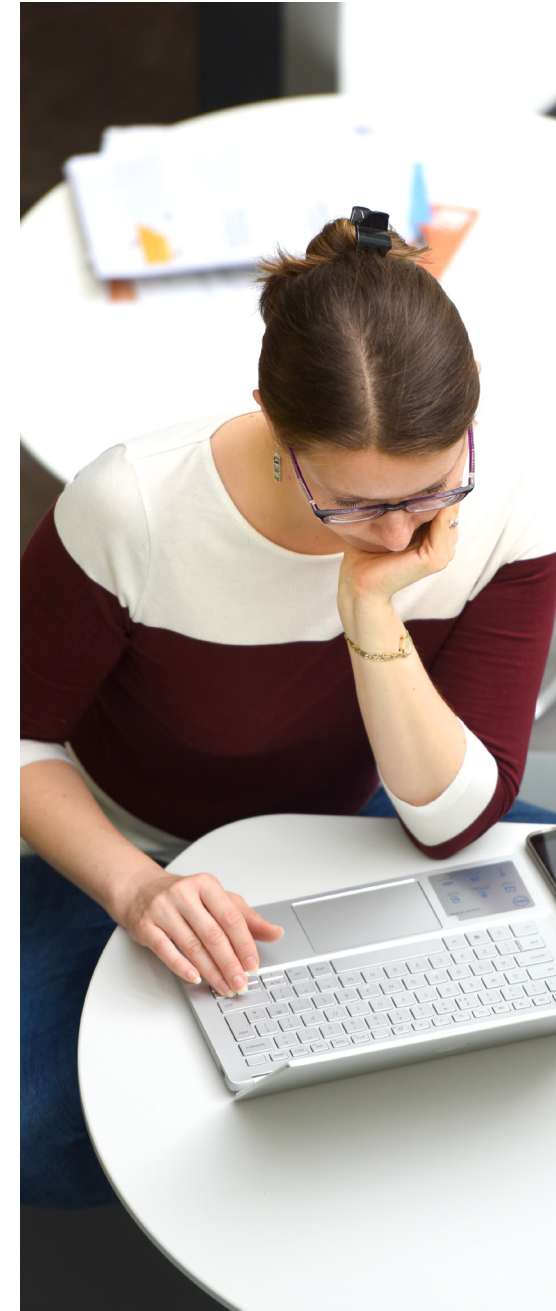
You will study six 20 credit modules, three of which will provide you with essential academic study and writing skills, develop your career aspirations and employability, and academic English skills, and three modules concerned with business and management topics. The six modules you will study are follows:

(a) Academic study and English skills

- English for Academic Purposes
- Study Skills
- Employability and Enterprise Skills

(b) Business and Management

- Business in Context
- Management: Putting Theory into Practise
- Managing Projects for Competitive Success

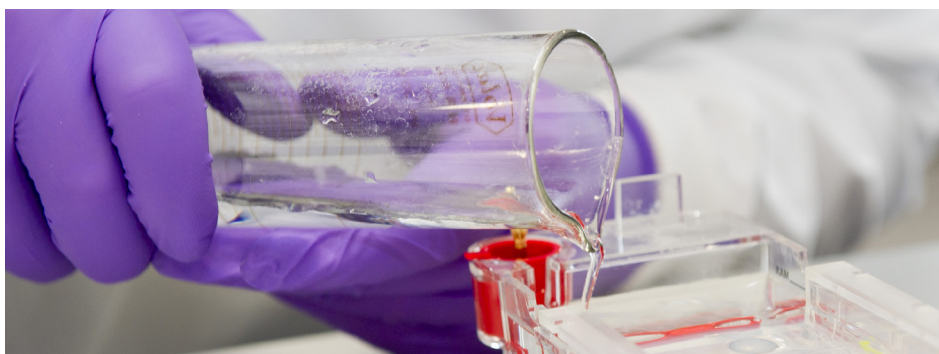




LIFE SCIENCES

Programme title	International Foundation Programme (Life Sciences)*
Awarding bodies	University of Suffolk
Level of award	FHEQ Level 3
Credit structure	120 Level 3: 120 Credits
Mode of attendance	Full-time
Standard length of programme	30 weeks
Intended award	International Foundation Certificate
English language requirements	IELTS 5.0 (minimum 4.5 in all components) or equivalent. If you do not meet these requirements there is an extended programme to enhance your English skills
Entry requirements	Successful completion of at least 12 years of high school. Please check with the admissions team for country specific requirements
Delivering institution	University of Suffolk

This definitive record sets out the essential features and characteristics of the International Foundation Programme (Life Sciences pathway). The information provided is accurate for students entering Level 3 in the 2021-22 academic year



International Foundation Programme: Life Sciences Pathway*

The Life Sciences Pathway has been designed to provide you with a foundation in biology, biochemistry and physics, and anatomy and physiology. Together with academic study and English language skills provided by the programme this will allow you to progress to one of four named undergraduate degrees at the University of Suffolk. The Life Sciences Pathway will allow you to choose to progress to one of the following undergraduate degrees:

- BSc (Hons) Biological Sciences
- BSc (Hons) Biomedical Science
- BSc (Hons) Nutrition and Human Health
- BSc (Hons) Wildlife, Ecology and Conservation Science

You will study six 20 credit modules, three of which will provide you with essential academic study and writing skills, develop your career aspirations and employability, and academic English skills, and three modules concerned with life sciences topics. The six modules you will study are follows:

- (a) Academic study and English skills
- English for Academic Purposes
 - Study Skills
 - Employability and Enterprise Skills
- (b) Life Sciences
- Principles of Biology
 - Fundamentals of Biochemistry and Biophysics
 - Foundations of Anatomy and Physiology



*subject to validation



DIGITAL TECHNOLOGIES

Programme title	International Foundation Programme (Digital Technologies)*
Awarding bodies	University of Suffolk
Level of award	FHEQ Level 3
Credit structure	120 Level 3: 120 Credits
Mode of attendance	Full-time
Standard length of programme	30 weeks
Intended award	International Foundation Certificate
English language requirements	IELTS 5.0 (minimum 4.5 in all components) or equivalent. If you do not meet these requirements there is an extended programme to enhance your English skills
Entry requirements	Successful completion of at least 12 years of high school. Please check with the admissions team for country specific requirements
Delivering institution	University of Suffolk

This definitive record sets out the essential features and characteristics of the International Foundation Programme (Digital Technologies pathway). The information provided is accurate for students entering Level 3 in the 2021-22 academic year



International Foundation Programme: Digital Technologies Pathway*

The Digital Technologies Pathway has been designed to provide you with a foundation in Python programming for computer science and mathematics for computing. Together with academic study and English language skills provided by the programme, this will allow you to progress to one of eight named undergraduate degrees at the University of Suffolk. The Digital Technologies Pathway will allow you to choose to progress to one of the following undergraduate degrees:

- BSc (Hons) Computing
- BSc (Hons) Cyber Security
- BSc (Hons) Data Science and Artificial Intelligence
- BA (Hons) Games Design
- BSc (Hons) Games Programming
- BSc (Hons) Network Engineering
- BSc (Hons) Software Engineering
- BSc (Hons) Web and Mobile Development

You will study six 20 credit modules, three of which will provide you with essential academic study and writing skills, develop your career aspirations and employability, and academic English skills, and three modules concerned with digital technology topics. The six modules you will study are follows:

- (a) Academic study and English skills
 - English for Academic Purposes
 - Study Skills
 - Employability and Enterprise Skills
- (b) Digital Technologies
 - Python Programming for Computing
 - Mathematics for Computing
 - Topics in Computing



*subject to validation

HOW MUCH IS THE COURSE?

If you already have an IELTS score of 5.0 with 4.5 in all components and do not need to take the Pre-Sessional English course first, the tuition fee for the standard International Foundation Programme is £10,000.

The tuition fee for the Extended International Foundation Programme with Pre-Sessional English is £13,000.

WHAT DO I DO NOW?

If you would like to apply to join the course or need further information, please contact our Admissions Team on **+44 (0)20 7539 3548** or **+44 (0)7376 499 570** or by email on international@globalbanking.ac.uk

